

DVP06AD-S



Instruction Sheet 安裝說明 安裝說明

Analogue Input Module

類比輸入模組

模拟输入模块

*4. If the ripple voltage of the input terminal of the load connected is large, and results in interference with the wiring, please connect a 0.1-0.47 μF and 25 V capacitor.

*5. Use cables with the same length (less than 200 m) and wire resistance of less than 100 ohm.

Specifications

Table with 3 columns: Analog/Digital (A/D) module, Voltage input, Current input. Includes details on power supply, range of analog input, resolution, response time, isolation, and communication mode.

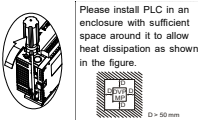
Others

Table with 2 columns: Power supply, Environment. Includes max. rated power consumption, operation/storage temperature and humidity, and vibration/shock immunity.

Installation & Wiring

Mounting Arrangements and Wiring Notes

How to install DIN rail DVP-PLC can be secured to a cabinet by using the DIN rail of 35mm in height and 7.5mm in depth. When mounting PLC to DIN rail, be sure to use the end bracket to stop any side-to-side movement of PLC and reduce the chance of wires being loosed.



Wiring instructions for terminals 22-16AWG, including a note to use 22-16AWG (1.5mm) single or multiple core wire on I/O wiring terminals.

Warning

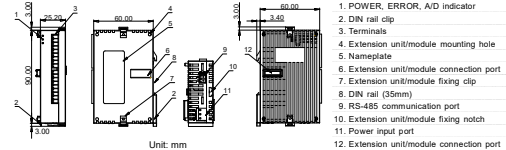
DVP06AD-S is an OPEN-TYPE device. It should be installed in a control cabinet free of airborne dust, humidity, electric shock and vibration. To prevent non-maintenance staff from operating DVP06AD-S, or to prevent an accident from damaging DVP06AD-S, the control cabinet in which DVP06AD-S is installed should be equipped with a safeguard.

Introduction

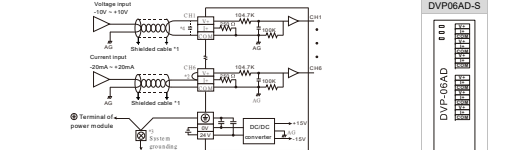
Model Explanation & Peripherals

- Thank you for choosing Delta DVP series. The analog signal module DVP06AD-S is able to receive 6 points of external analog signal inputs (both in voltage and current) and convert the signals into 14-bit digital ones. It is able to read and write the data in the module through FROM/TO instructions given by the program of DVP-PLC slim type series CPU. There are 48 16-bit control registers in the module.

Product Profile & Outline



External Wiring



- When performing analog input, please isolate other power wirings.
When connecting to current signals, please make sure to short-circuit "V+" and "I-" terminals.
Please connect the terminal on both the power module and DVP06AD-S to the system earth point and ground the system control or connect it to the cover of power distribution cabinet.

RS-485 parameter table with columns for parameter, latched, register content, and bit positions (b15-b0).

CR for input mode, setting of average times, OFFSET value and GAIN value will be reset after returning to default settings.

CR#2 communication format settings: for modules with firmware V4.10 or previous versions, b11-b8 data format selection is not available. For ASCII mode, the format is fixed to 7, E, 1 (H0XX) and for RTU mode, the format is fixed to 8, E, 1 (H0CXX/H80X).

Table for CRC check code with columns: exchange low and high byte of CRC, data format, description, and baud rate.

Note *1: This is only available for ASCII format.
Write H'0310 into CR#2 to change of RTU, exchange low and high byte of CRC check code, 8.N.1 and baud rate at 57600 bps.

注意事項

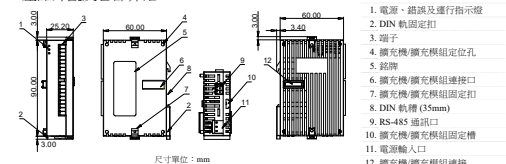
- 請在使用之前，詳細閱讀本使用說明書。
請將本上電機與電子實施配線，務必確認電源。
本產品為開放型 (OPEN TYPE) 機殼，因使用本機時，必須將之安裝於具防塵、防塵及電擊/衝擊意外於外部配線內，務必須確保保護輸入/輸出之工具與設備才可打開，防止非專業人員操作或意外衝擊本機，造成危險及損壞。
交流輸入電源不連接於輸入/輸出端，否則可能造成或嚴重之損壞，因此請在上電之前再次確認電源配線。
左標之插頭與右標之插頭為正確的插頭，可避免產品抗插頭能力。

產品簡介

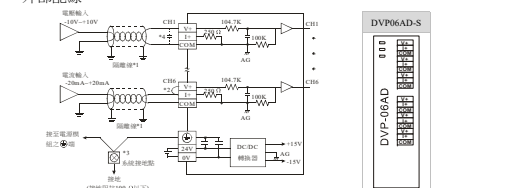
說明及週邊裝置

- 謝謝您採用台灣 DVP 系列產品-DVP06AD-S 類比信號輸入模組可接受外部 6 點類比信號輸入 (電壓或電流) 並將之轉換成 14 位元之數位信號。透過 DVP 智慧型主機 (Slim type) 主機程式以指令 FROM/TO 來讀取模組內之資料，模組內具有 49 個 CR (Control Register) 暫存器，每個暫存器為 16 bits。
使用者可藉由配線選擇電壓輸入或電流輸入，電壓輸入範圍 ±10V DC (解析度為 1.25mV)，電流輸入範圍 ±20mA (解析度為 5μA)。

產品外觀及各部介紹

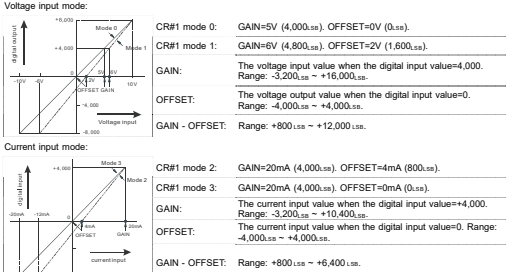


外部配線



- 類比輸入請與其他電源線隔離。
如果連接電流信號時，V+ 及 I- 端子請務必短路。
請將電源線與 I- 端及 DVP06AD-S 類比信號輸入模組之端連接至系統接點，再將系統接點作三種接法或接到其他之模塊上。
如果發生電流輸入/輸出端最大造成配線電壓降時，請連接 0.1 - 0.47μF 25V 之電容。
空端子請務必接配線。
注意：線材長度需掌握，單一線長 < 200 m 且單一線徑 < 100 ohm。

Adjusting A/D Conversion Curve



The user can adjust the OFFSET/GAIN values according to the actual needs by changing the OFFSET value (CR#18 - CR#23) and GAIN value (CR#24 - CR#29).

規格

功能規格

Table with 3 columns: Analog/Digital (A/D) module, Voltage input, Current input. Lists specifications for power supply, gain, range, resolution, and input impedance.

Table with 2 columns: Input impedance, Response time. Lists specifications for input impedance and response time.

Table with 2 columns: Communication mode, Self-diagnosis function. Lists specifications for communication mode and self-diagnosis function.

其他規格

Table with 2 columns: Rated maximum power consumption, Operation/storage environment. Lists specifications for power consumption and operating environment.

安裝及配線

盤內安裝及配線

PLC 在安裝時，請按配對封閉式之封閉箱內，其周圍應保持一定之空間 (如下圖所示)，以確保 PLC 數碼功能正常。

- 輸出/輸入端請使用 22-16AWG (1.5mm) 單蕊漆線或多蕊漆線，端子規格如左所示。
PLC 端子線除拉力為 1.95 kg-cm (1.7lb-in) 外。
在配線時請勿讓輸入點位信號與輸出點或電源等動力線置於同一線槽內。
只能使用 60/75°C 銅導線。

